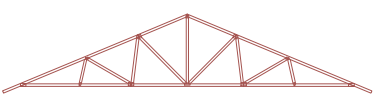
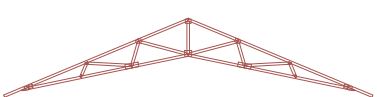
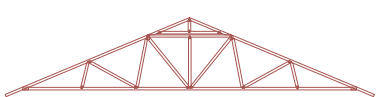
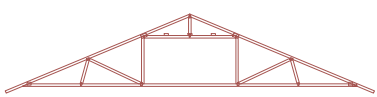




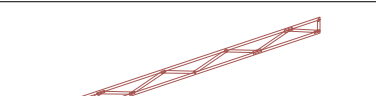
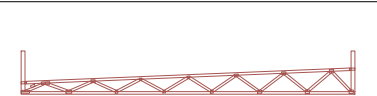
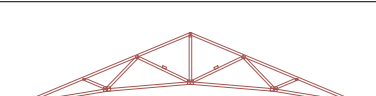
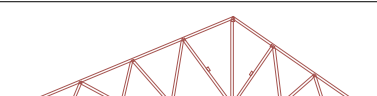
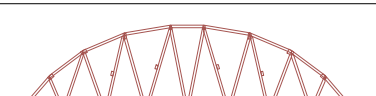
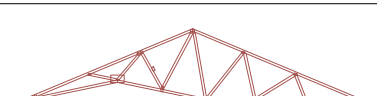
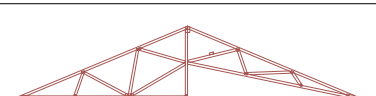
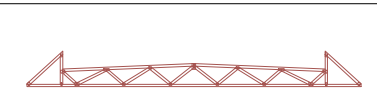
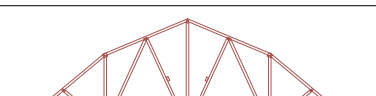

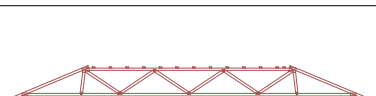
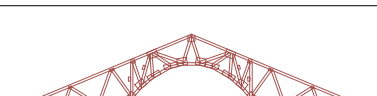
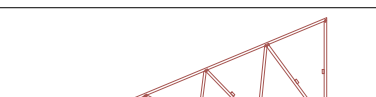

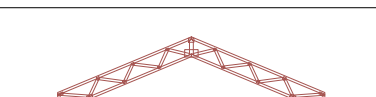
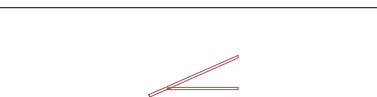
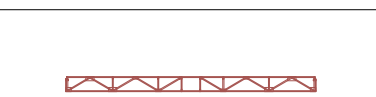
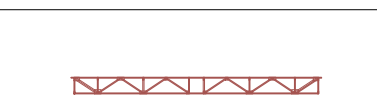
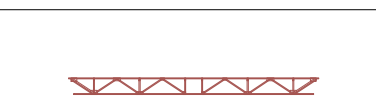
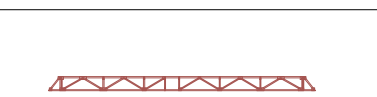


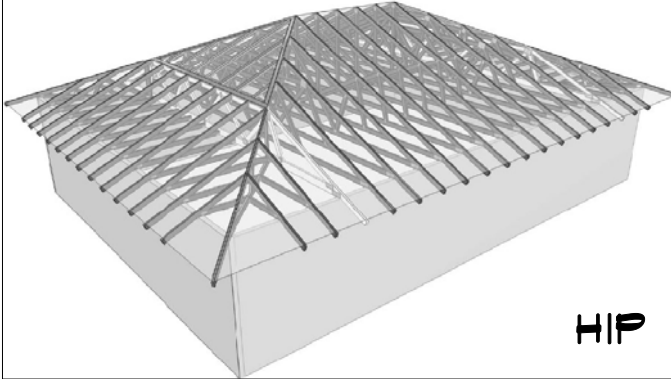
DIFFERENT TYPES OF TRUSSES

 <p>FLAT (COMMON) TRUSS MOST COMMON TYPE</p>	 <p>SCISSOR TRUSS MOST USED FOR VAULTED CEILINGS</p>	 <p>PIGGYBACK TRUSS USED WHEN A SINGLE TRUSS IS TOO TALL TO BUILD OR SHIP</p>	 <p>ATTIC TRUSS PROVIDES LIVING OR STORAGE SPACE IN THE TRUSS</p>
 <p>NON-STRUCTURAL GABLE TRUSS USED WHEN GABLE IS OVER CONTINUOUS BEARING</p>	 <p>NON-STRUCTURAL DROP-TOP GABLE TRUSS OVER CONTINUOUS BEARING, DOUBLE TOP CHORD DESIGNED FOR NOTCHING</p>	 <p>STRUCTURAL GABLE TRUSS USED OVER CLEAR SPANS (NOT CONTINUOUS BEARING)</p>	 <p>STRUCTURAL DROP-TOP GABLE TRUSS USED OVER CLEAR SPANS (NOT CONTINUOUS BEARING) DOUBLE TOP CHORD IS DESIGNED FOR NOTCHING</p>
 <p>SLOPING PARALLEL TRUSS ACTS MUCH LIKE A RAFTER</p>	 <p>SLOPING FLAT WITH PARAPETS USED FOR "SANTA FE" STYLE HOMES</p>	 <p>CAMBERED TRUSS SLIGHTLY ARCHED BOTTOM CHORD</p>	 <p>DUAL PITCH OR SALTBOX TRUSS ASYMMETRICAL, WITH TWO DIFFERENT PITCHES</p>
 <p>BOWSTRING TRUSS ARCHED TOP, USED MOSTLY IN COMMERCIAL AND INDUSTRIAL STRUCTURES</p>	 <p>CATHEDRAL VAULT TRUSS VAULTED OVER ONE ROOM OR AREA</p>	 <p>PARTIAL VAULT OR STUDIO VAULT PROVIDES VAULTED CEILINGS OVER 1/2 OF THE SPAN</p>	 <p>MANSARD TRUSS USUALLY COMMERCIAL, PROVIDES HIDDEN AREAS ON ROOF FOR HVAC SYSTEMS</p>
 <p>GAMBREL TRUSS "BARN" STYLE</p>	 <p>POLYNESIAN TRUSS SYMMETRICAL TRUSS WITH TWO DIFFERENT PITCHES EACH SIDE</p>	 <p>STEP-DOWN TRUSS USED IN CONJUNCTION WITH OTHER TRUSSES TO CREATE A HIP ROOF</p>	 <p>BARREL VAULT TRUSS PROVIDES AN ARCHED CEILING AREA</p>
 <p>MONO TRUSS ONE PITCH</p>	 <p>MONO SCISSOR ONE PITCH WITH VAULTED CEILING</p>	 <p>VAULTED PARALLEL TRUSS MIMICS A RAFTERED ROOF</p>	 <p>JACK TRUSS REPLACES RAFTERS AT HIP ROOFS</p>
 <p>FLOOR TRUSS, BOTTOM CHORD BEARING PROVIDES CUTOUT FOR END RIBBON</p>	 <p>FLOOR TRUSS, TOP CHORD BEARING HANGS FROM WALLS OR TRUSS HANGERS</p>	 <p>FLOOR TRUSS, TOP CHORD BEARING OPEN ENDED WEB DESIGN</p>	 <p>FLOOR TRUSS, BOTTOM CHORD BEARING ANGLED ENDS</p>

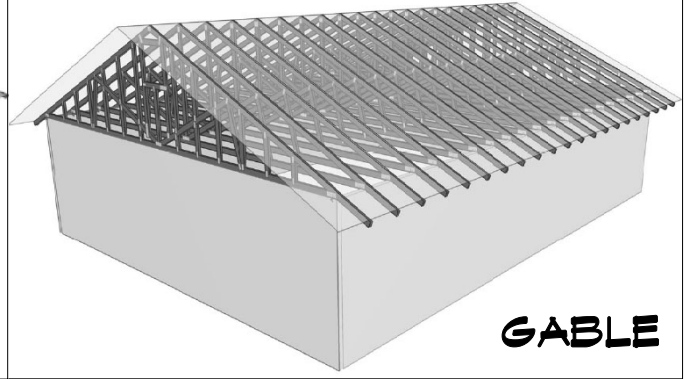


4636 E. BUFFALO SOLDIER TRAIL
SIERRA VISTA, AZ 85650
(520) 378-2302

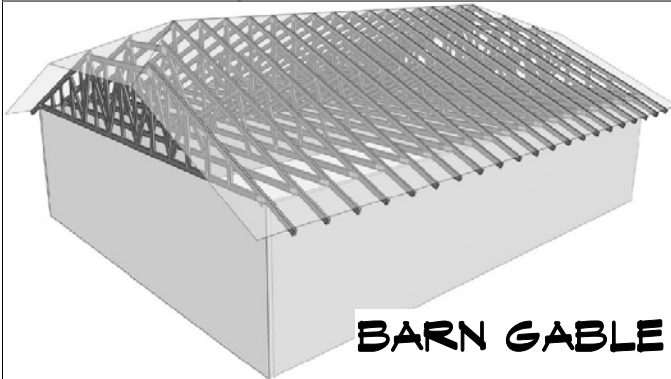
DIFFERENT TYPES OF ROOF STYLES



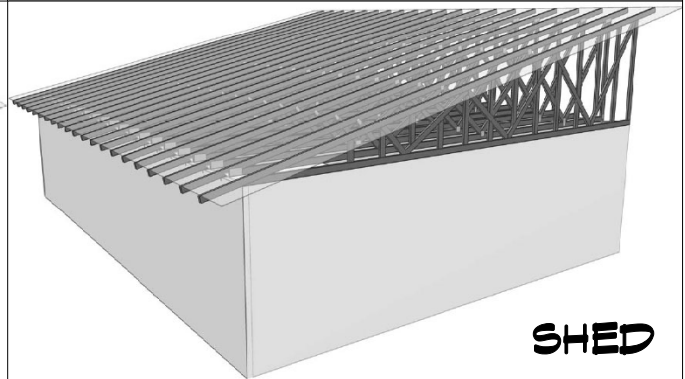
HIP



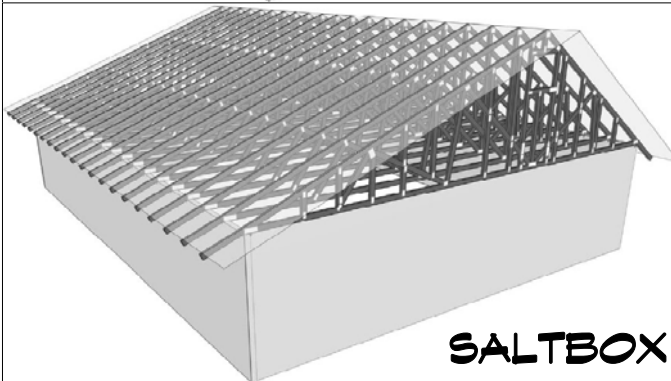
GABLE



BARN GABLE



SHED



SALTBOX



4636 E. BUFFALO SOLDIER TRAIL
SIERRA VISTA, AZ 85650
(520) 378-2302